

Float Valves

Float Valves for External Installation on Tanks NV 67e



Level Regulating Valve

Technical Data

Connection DN	15 - 100
Nominal Pressure PN	16
Operating Pressure	0 - 16 bar
K _{vs} -Value	4 - 100 m ³ /h
Temperature	130 °C
Medium	liquids

Description

Float valves automatically control liquid levels in sealed or open (non-pressurised) tanks and vessels without requiring external energy. The float registers the liquid level and directly controls the valve via a lever. A change in the liquid level immediately results in a changed flow volume.

NV 67e is a pipeline valve for tank mounting capable of handling large volumes. NV 67e is a pipeline valve with tank connecting flange for vertical flow. The valves are made from deep-drawn stainless steel featuring excellent corrosion resistance. The valve cone is fitted with a soft seal.

Top and bottom sections of the valve body are connected by a clamp ring and two bolts. Servicing/maintenance is easy and does not call for special tooling.

The valves are fitted with a float bar on which a float featuring an inner tube is mounted. By changing the position of the float on the bar the required liquid level is infinitely variable.

The following note applies to float valves fitted with float bars: If the liquid level is below the float bar i.e. if the float points downwards, a guide for the float bar should be installed.

When enquiring or ordering please quote the suffix letters given below:

- Z = inlet. Valve closes when float rises
- A = outlet. Valve closes when float drops
- w = horizontal flow
- o = upward flow
- u = downward flow

example: float valve Z/o (inlet valve for vertical flow upwards)

Standard

- » Float bar stainless steel
- » Cylindrical float SC 8 stainless steel
- » Quick-release body clamp ring

Options

- » Various seal materials suitable for your medium
- » Special versions on request

Operating instructions, know how and safety instructions must be observed. All the pressure has always been indicated as overpressure. We reserve the right to alter technical specifications without notice.



K_{vs}-Values [m³/h]

nominal diameter DN

15	20	25	40	50	65	80	100
4	5	6	20	32	50	80	100

Float Valves

Float Valves for External Installation on Tanks NV 67e



Level Regulating Valve

Materials	
Body	CrNiMo-steel
Cone, Seat	CrNiMo-steel
Piston, Spindle	CrNiMo-steel
Valve Seal	EPDM
Linkage	CrNiMo-steel
Float Rod	CrNiMo-steel
Float	CrNiMo-steel

Dimensions [mm]								
size	nominal diameter DN							
	15	20	25	40	50	65	80	100
A*	160	160	160	200	230	290	310	350
B	185	185	185	220	220	317	317	317
C	125	125	125	145	145	211	211	211
F	210	210	210	280	280	420	420	420
G	30	30	30	40	40	60	60	60
H	DN100	DN100	DN100	DN125	DN125	DN200	DN200	DN200

* Overall length tolerances in acc. with DIN EN 558

Weights [kg]								
nominal diameter DN								
	15	20	25	40	50	65	80	100
	5.8	6.2	6.5	14	14.5	28.5	30.5	31.5

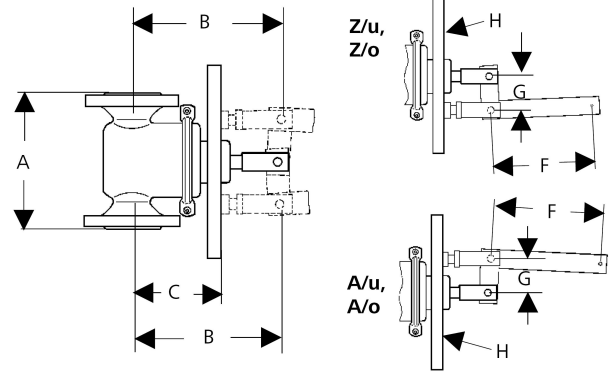
Dimensions Cylindrical Float SC 8 [mm] (ø = height) *								
nom. diam. DN	15	20	25	40	50	65	80	100
float ø mm	200	200	200	280	280	305	305	305

* weights see sheet no. SC/2.1....

Customs Tariff Number
84818059

Special designs on request.
 The pressure has always been indicated as overpressure.
 Mankenberg reserves the right to alter or improve the designs or specifications of the products described herein without notice.

Dimensional Drawing



H = tank add-on flange